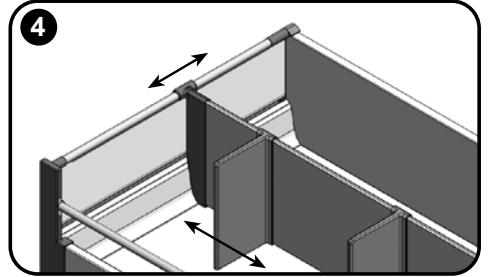
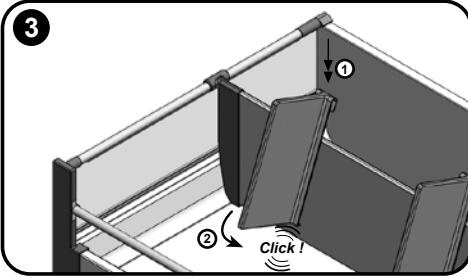
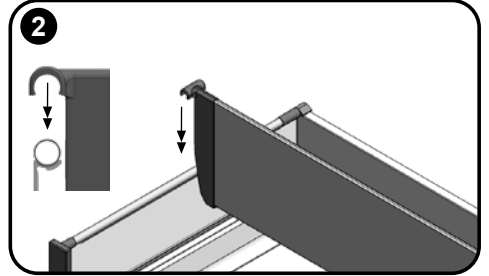
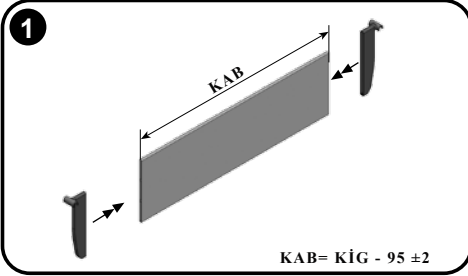
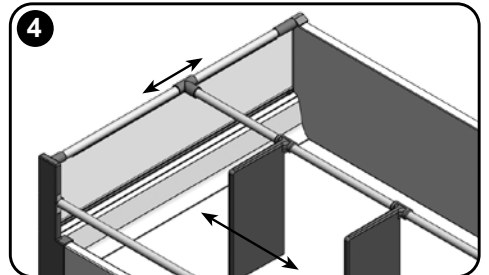
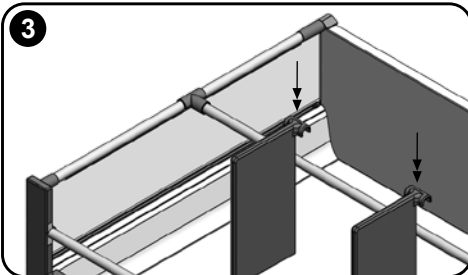
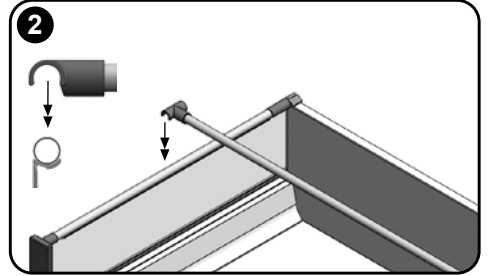
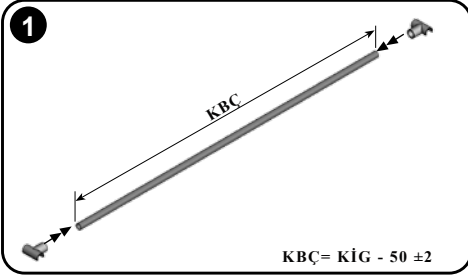


## Ara Bölme Panelleri ve Ayraçları Kullanım Kılavuzu



### Bordürlü Ara Bölme Panel Ayraçı



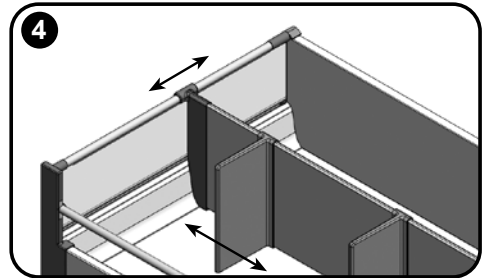
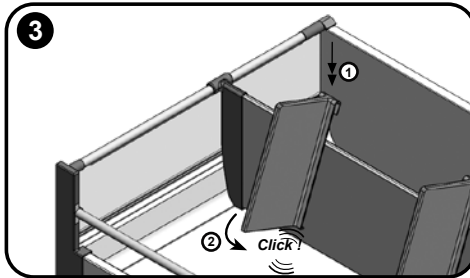
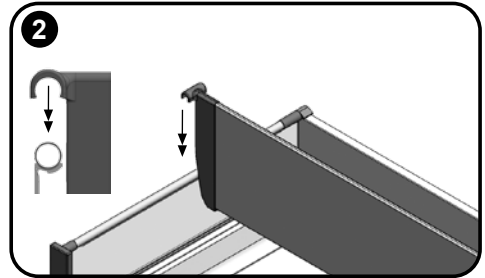
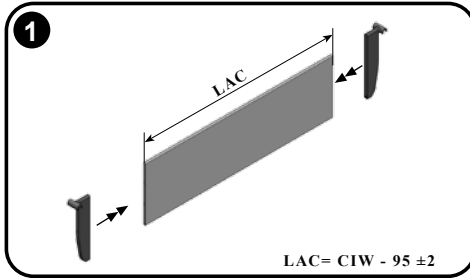
**NOT:** Tek Bordürlü Çekmecelerde'de Ara Bölme Panelleri ve Ayraçlarını aynı işlemleri yaparak kullanabilirsiniz.

\*KİG = Kabin İç Genişliği

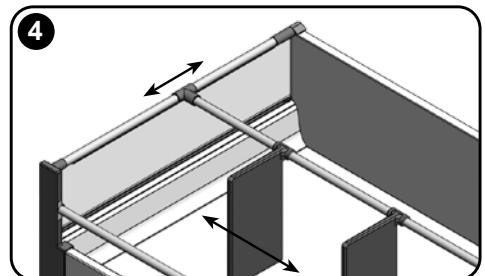
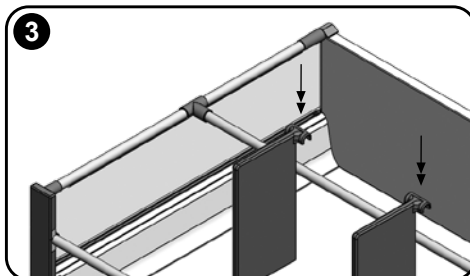
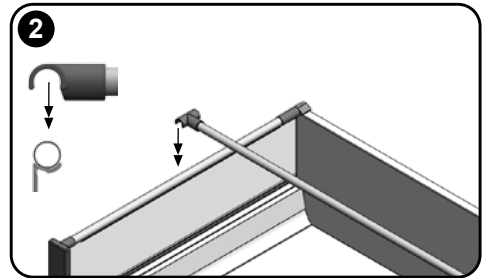
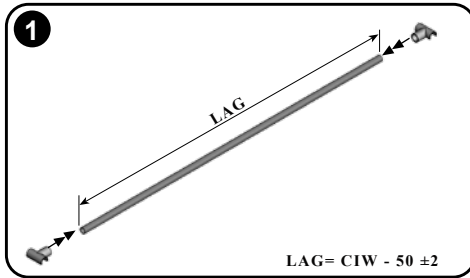
\*KAB = Kısaltılabilir Ara Bölme

\*KBC = Kısaltılabilir Bordür Çubuğu

## Drawer Inside Dividing Systems Manual



### Lateral Dividing With Gallery Railing



**NOTE:** Cros dividing panels and lateal dividers can be used with same applications for single gallery railing drawer, as well.

\*CIW = Cabinet Internal Width  
\*LAC = Lengthwise Adjustable Cross Dividing Panel  
\*LAG = Lengthwise Adjustable Gallery Railing