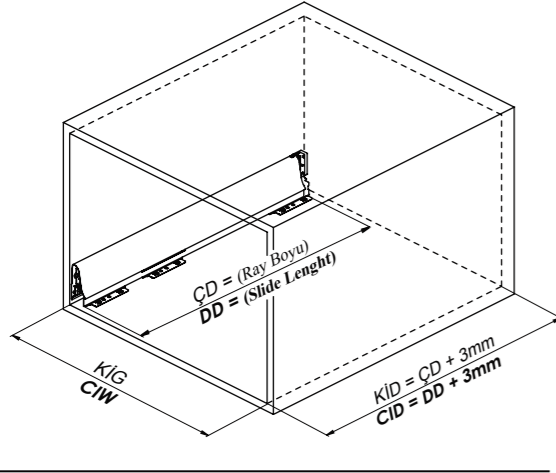
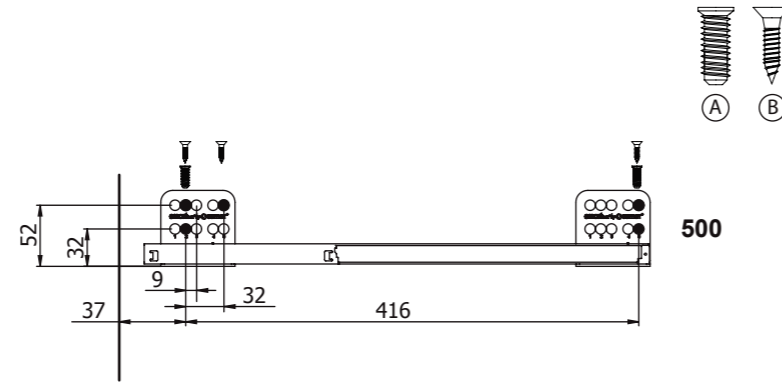


Kabin Ölçüleri  
Cabinet Dimensions



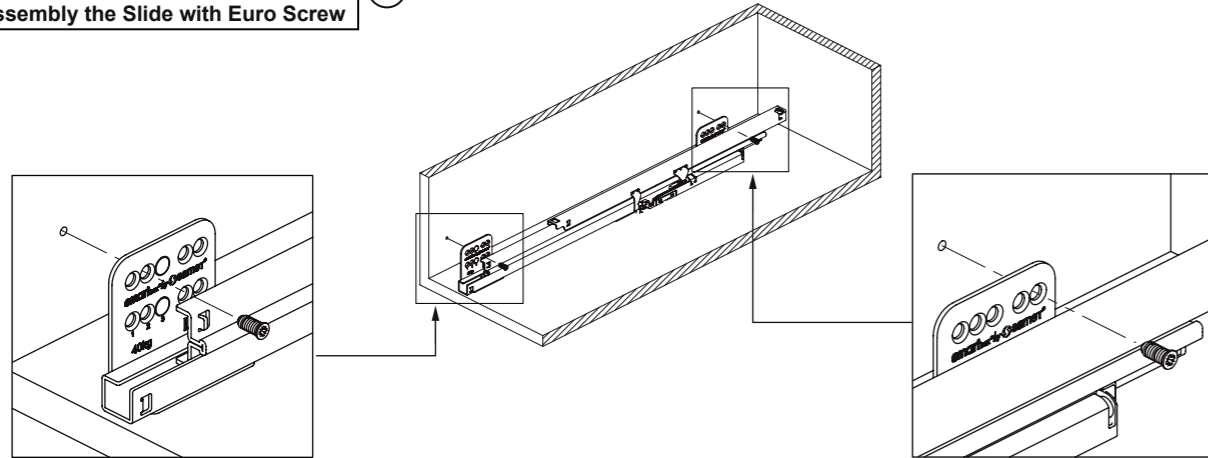
Rayların Vida Konum Ölçüleri  
Screw Location for the Slides

Rayı, koyu renk ile işaretlenmiş deliklerden vidalayınız.  
Screw the slide from marked holes.



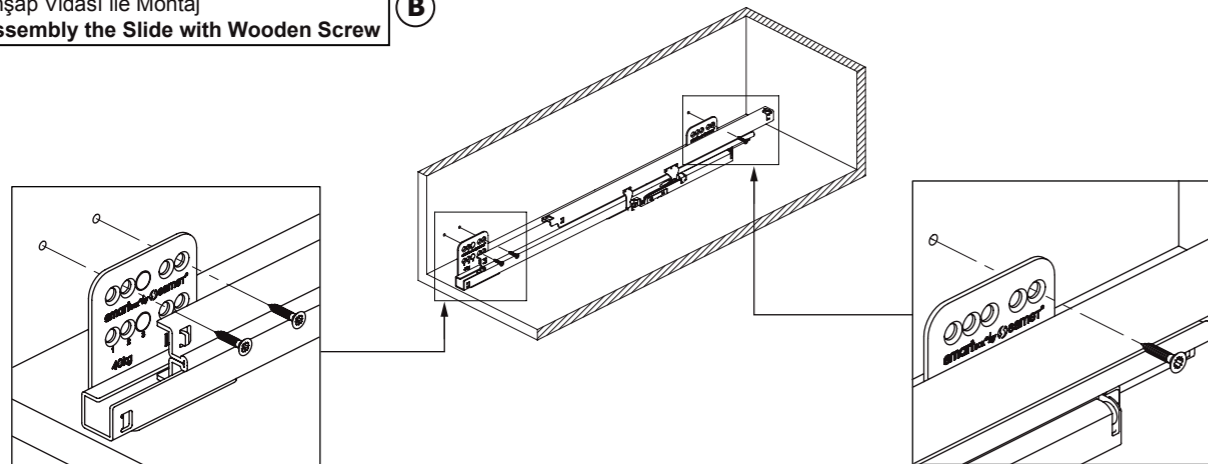
Euro Vida ile Montaj  
Assembly the Slide with Euro Screw

A

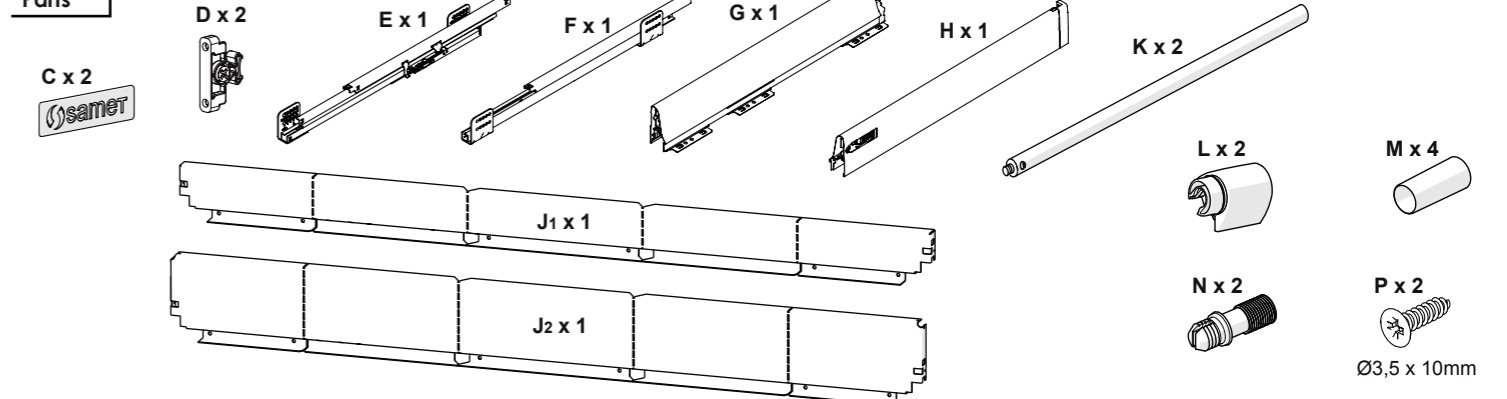


Ahşap Vidası ile Montaj  
Assembly the Slide with Wooden Screw

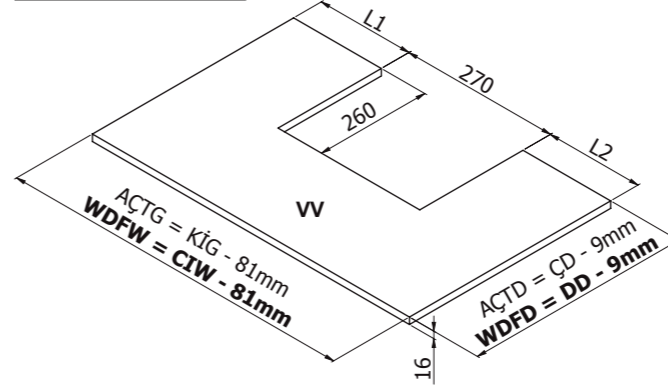
B



Parçalar  
Parts

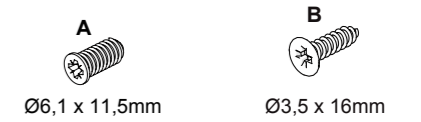


Ah. Çekmece Tabanı  
Wd. Drawer Floor

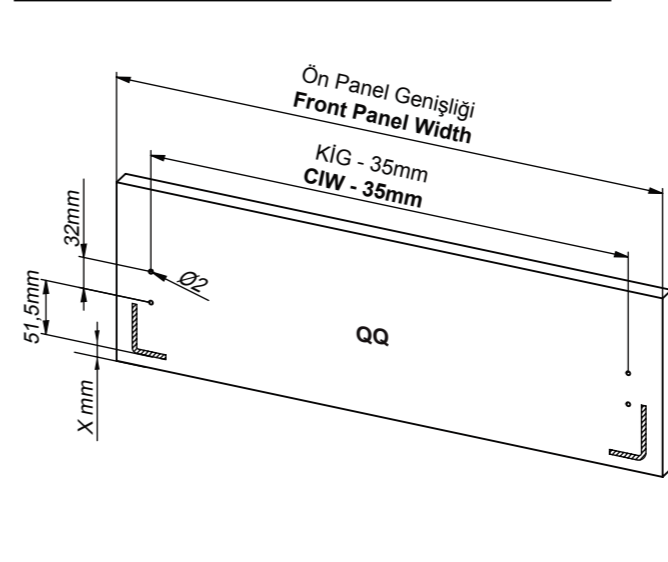


Kabin İç Genişliği : KIG	Cabinet Internal Width : CIW
Kabin İç Derinliği : KID	Cabinet Internal Depth : CID
Çekmece Derinliği : ÇD	Drawer Depth : DD
Ray Uzunluğu : RU	Slide Length : SL
Ah.Çek.Tabanı Derinliği : AÇTD	Wd. Drw. Floor Depth : WDFD
Ah.Çek.Tabanı Genişliği : AÇTG	Wd. Drw. Floor Width : WDFW
Ah.Arkalık Genişliği : AAG	Wd. Backboard Width : WBW

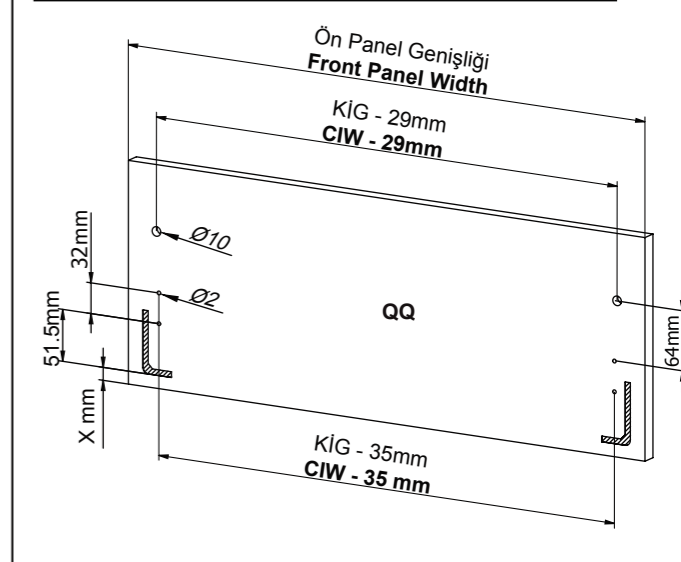
Tavsiye Edilen Vidalar  
Recommended Screw



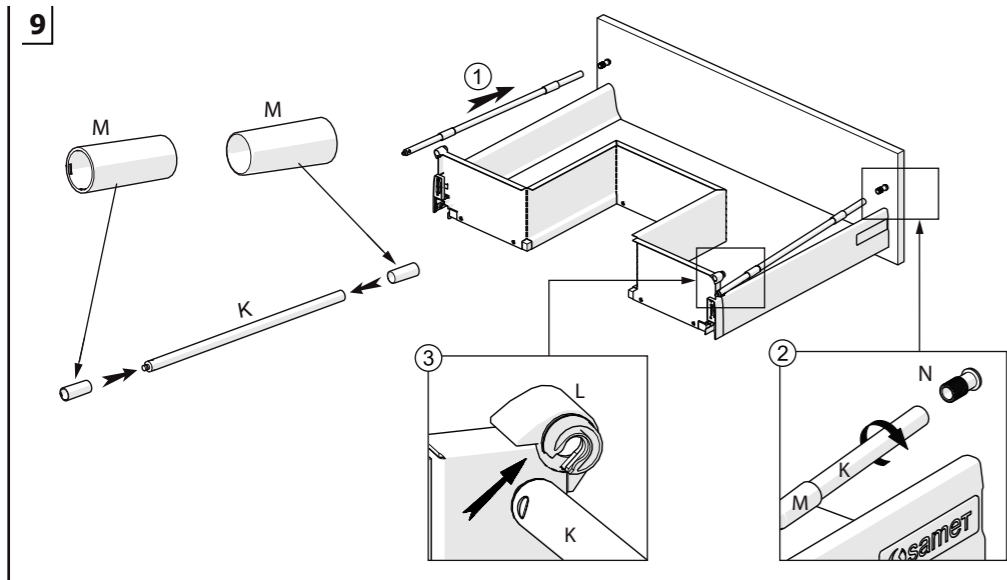
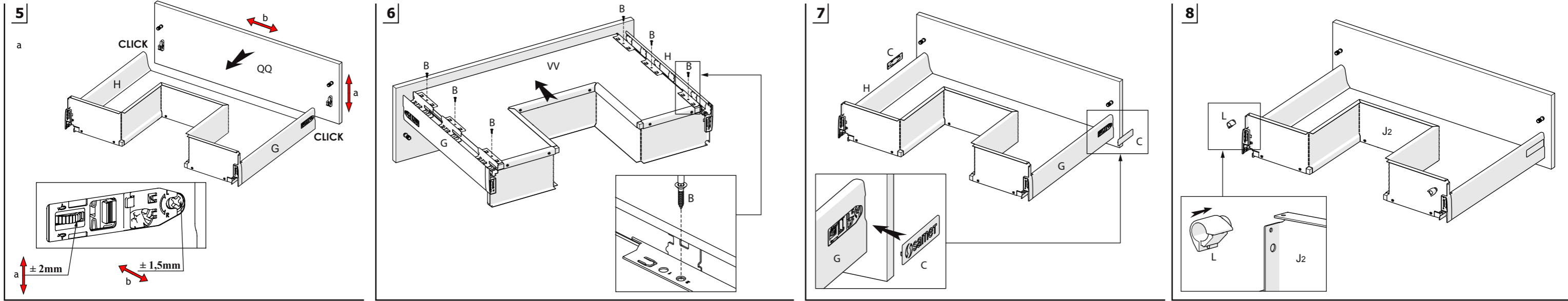
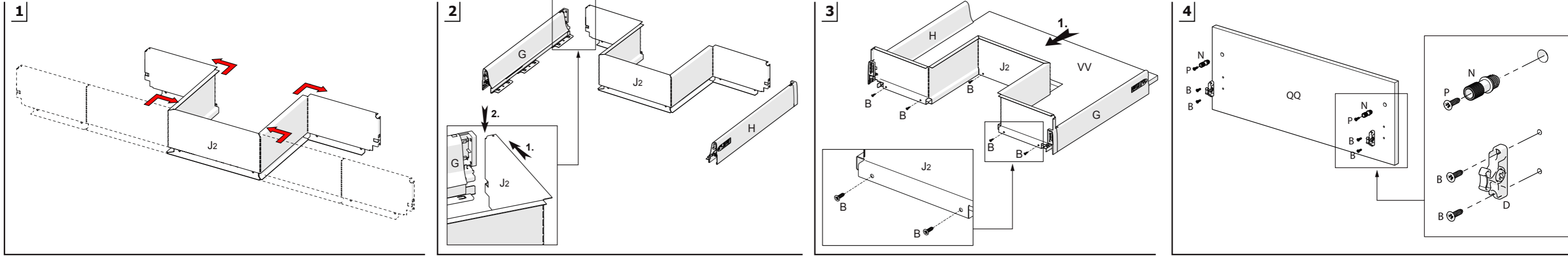
Bordürsüz Ön Panel & Bağlantı Parçası  
Without Gallery Railing Front Panel & Connection Pieces



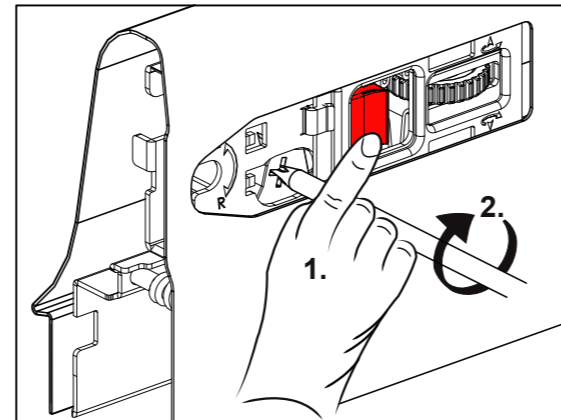
Tek Bordürlü Ön Panel & Bağlantı Parçası  
Single Gallery Railing Front Panel & Connection Pieces



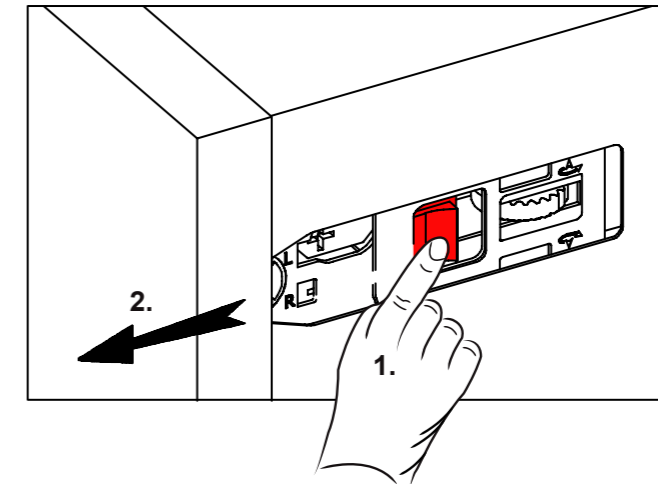
-2-



Kilit tırnağı kapanması durumunda  
If the lock slots shut down due to system failure



Ön paneli çıkarmak için  
Removing the front panel



Önemli  
Important

Bordürsüz Metal Panel (J1) kullanımında;  
"8" ve "9" numaralı işlemler uygulanmaz.

During the usage of metal panel  
without gallery railing (J1),  
the processes numbered with "8" and "9"  
should not be executed.